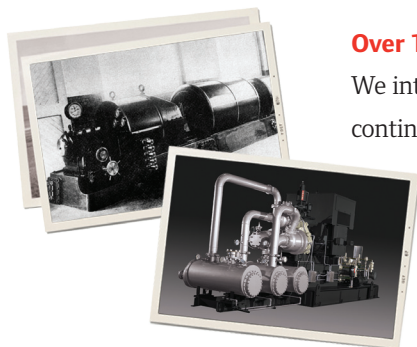




Centac[®] Centrifugal Air Compressors



A Tradition of Proven Reliability, Efficiency and Productivity



Over 100 years of Oil-Free Innovation

We introduced our first oil-free centrifugal compressor in 1912, and over the decades we've continued to develop rugged, reliable, industry-leading compressor technologies. Ingersoll Rand has become the leader in oil-free centrifugal compressed air because our technological advances are designed for the specific performance needs of our customers' industries. No matter what the application, Ingersoll Rand centrifugal compressors help eliminate inefficiencies, contaminants and breakdowns that can result in costly downtime, product liability or damage to your brand reputation, while reducing total lifecycle costs.

RELIABILITY

Superior Design, Superior Life

- Fewer moving parts means less downtime
- Dynamically balanced rotor assemblies ensure extremely low vibration
- Carbon ring seals minimize air leakage

Lowers cost of ownership

EFFICIENCY

Optimized Components and Systems

- Multi-stage compressors combine performance with energy savings
- Advanced impeller design provides maximum pressure control over the widest operating range

Reduces energy use and operating costs

PRODUCTIVITY

User-Friendly Operation and Accessibility

- Easy-access components make maintenance faster and easier
- Simplified compressor design provides longer intervals between maintenance

Maximizes uptime

Centac® C1000



The Centrifugal Technology Your Industry Demands



Oil-Free, Risk Free

The first to be certified ISO 8573-1:2001 Class 0, our oil-free centrifugal compressors offer efficient, economical and reliable solutions for delivering compressed air. These high-performing, versatile compressors provide 100% oil-free air in all operating conditions.

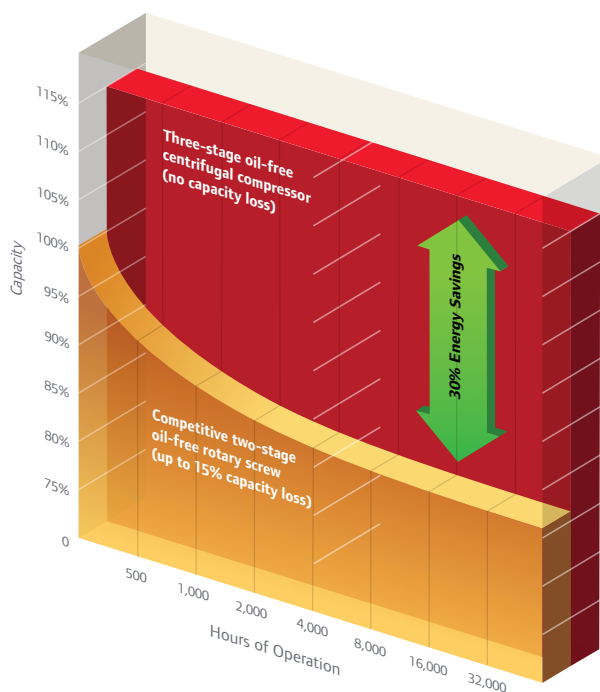
ISO 8573
Class 0
Oil-Free Air



Centac® C3000

Greater Capacity for Greater Efficiency

Ingersoll Rand centrifugal compressors offer up to a 15% capacity advantage over competitive two-stage, oil-free compressors. This advantage increases to as much as 30% as our capacity remains constant, while competitive capacities decrease by up to 15%.



Centac[®]...Engineered for Performance

Ingersoll Rand centrifugal compressors are designed for applications where reliability, productivity and efficiency are essential to getting the job done right...and the compressor's packaged design makes it easy to install wherever needed.

Long-Life Gears

25-year rated, uniformly hardened gears provide extreme reliability

Efficient Impeller Design

Backward leaning impellers provide constant pressure control while maximizing efficiency and turndown range

Moisture Separator

Stainless steel moisture separator provides superior reliability and helps prevent corrosion, ensuring high air quality

Coolers

Precisely engineered coolers maintain a low pressure drop and the large surface area provides maximum cooling efficiency. The Integral cooler design helps the compressor keep a compact footprint*

*Optional external configurations available

High Capacity Bearings

Hydrodynamic bearings are completely non-contact, offering virtually unlimited life and maximum efficiency with 2-3 times the lifespan of traditional bearings

Rotors

High grade stainless steel rotors are fully balanced and require no coating, providing constant performance over time

Seals

Fully floating, non-contact carbon ring seals minimize air leakage and prevent oil from migrating into the compressed air stream; single-piece seal construction provides significantly better performance than other technologies, saving valuable compressed air

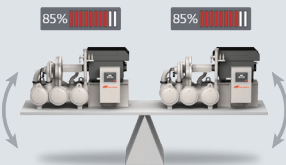
Diffuser

Optimally designed to work with Ingersoll Rand's backward leaning impellers for maximum efficiency

Advanced Centrifugal Control

Optimize Your Compressed Air System with Xe-Series Controls

The Ingersoll Rand Xe-Series controller uses the latest control algorithms to help lower energy consumption. Built-in control logic ensures system reliability by precisely managing discharge pressure and maximizing throttle range. The controller's intuitive, high-resolution color display makes critical information quick and easy to find. And with web-enabled alerts, the Xe-Series controller helps you maintain optimal operation automatically.



Web-Enabled Communication

- Start/stop/load/unload and checks parameters remotely
- Email notification of alarms and trips
- Built-in performance reporting and visual trending with automated inspection logs

More Connectivity Choices

- Communicates directly with your DCS system through Modbus
- Ethernet connection enables communication and control through tablets, computers or mobile devices
- Connects seamlessly with Ingersoll Rand system controls
- Sequences up to four additional controlled compressors with no additional hardware

Intelligent Compressor Control

- **Constant Pressure Control** - Continually maintains precise discharge pressure to adjust for sudden demand variations
- **Auto Dual Control** - Provides enhanced energy savings during partial load conditions
- **Energy Smart Set Point (ESS)** - Adjusts settings to balance and share loads between multiple compressors in the same system, reducing bypassed air and saving energy

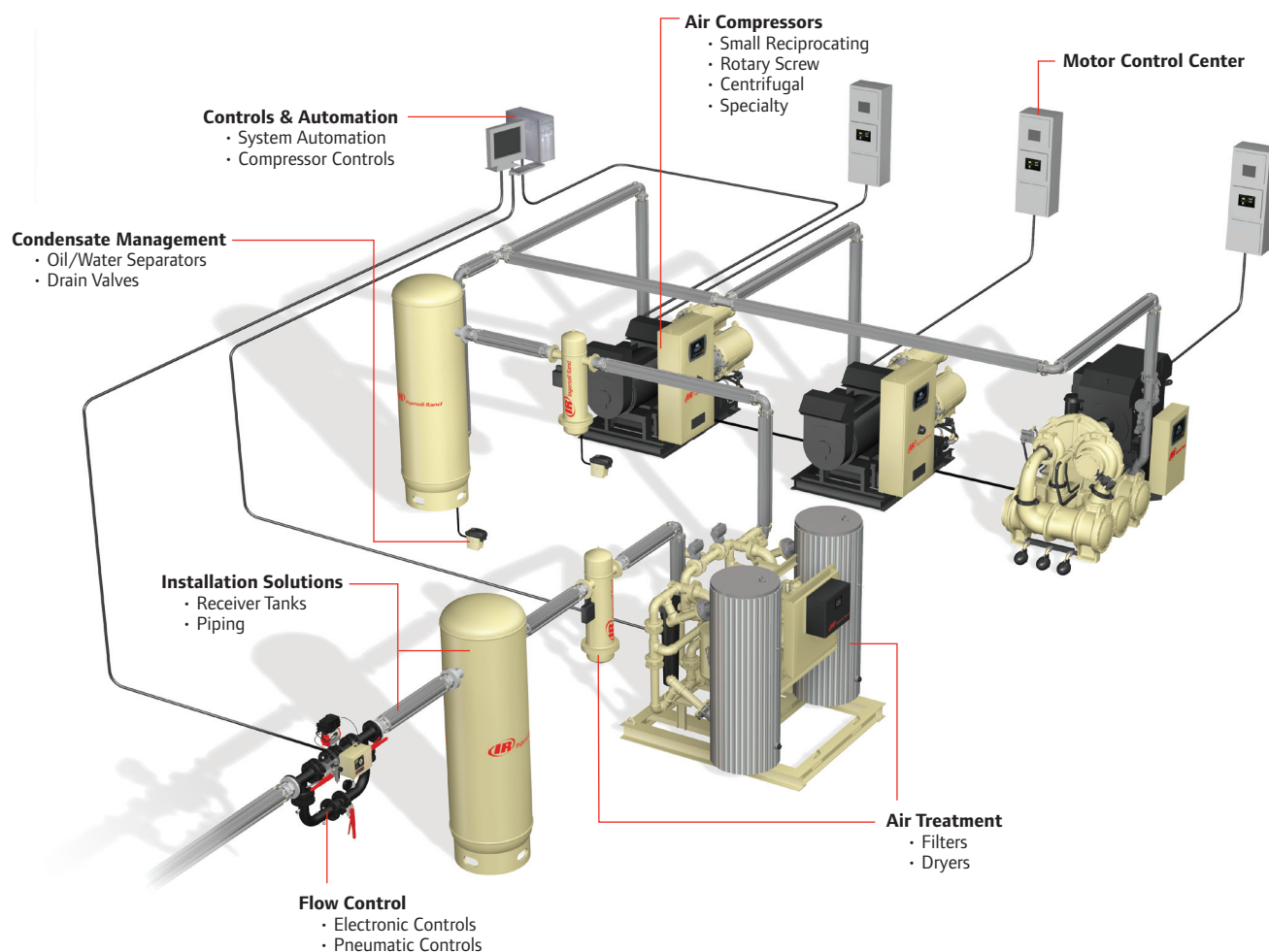
We Build Solutions

We do more than build products at Ingersoll Rand. We bring our customers unmatched experience in designing comprehensive compressed air systems that cover virtually any need.

Systems and Support to Keep You Productive

Ingersoll Rand not only designs and builds extremely efficient air systems, it solves process and business problems as well. This helps customers succeed in today's global economy through enhanced reliability, energy efficiency and productivity.

No matter what your industry or location, Ingersoll Rand is committed to serving you 24/7. Our worldwide network of distributors, engineers and certified, factory-trained technicians are a phone call away — ready to support you with innovative, cost-effective and performance-enhancing solutions.



Low Pressure 0.35-2.10 bar g (5-30 psig)				
Model	m³/min	Flow	Power	
		cfm	kW	hp
CH5	42 - 80	1,300 - 3,000	132 - 270	175 - 350
CH6	90 - 160	3,000 - 6,000	270 - 430	350 - 600
Standard Pressure 3.1-10.3 bar g (45-150 psig)				
Model	m³/min	Flow	Power	
		cfm	kW	hp
C400	45-67	1,600-2,350	260-400	350 - 500
C700	54-119	1,900-4,200	200-700	300 - 900
C1000	127 - 212	4,500 - 7,500	350 - 1,300	500 - 1,750
3CII	187-280	6,600-10,000	670-1,600	900-2,000
C3000	270-420	9,500-15,000	1,000-2,400	1,500 - 3,500
5CII	450-850	16,000-30,000	1,500-4,600	2,000 - 6,000
High Pressure 10.3-42.0 bar g (150-610 psig)				
Model	m³/min	Flow	Power	
		cfm	kW	hp
2CII	90 - 130	3,000 - 4,600	750 - 1,300	1,000 - 1,750
C750	50 - 60	1,800 - 2,100	500 - 660	700 - 900
C1050	115	4,000	1,150	1,500
3C	140 - 285	5,000 - 10,000	1,300 - 2,250	1,750 - 3,000
4C	255 - 425	9,000 - 15,000	1,500 - 3,350	2,000 - 4,500

Weights and dimensions are estimated and will vary with scope and options.
Performance is nominal. Please contact Ingersoll Rand for specific data.

Our Broad Range of Centac® Family Compressors





Ingersoll Rand (NYSE:IR) is a world leader in creating and sustaining safe, comfortable and efficient environments in commercial, residential and industrial markets. Our people and our family of brands—including Club Car®, Ingersoll Rand®, Schlage®, Thermo King® and Trane®—work together to enhance the quality and comfort of air in homes and buildings, transport and protect food and perishables, secure homes and commercial properties, and increase industrial productivity and efficiency. We are a \$14 billion global business committed to sustainable business practices within our company and for our customers.



www.ingersollrandproducts.com

Distributed by:



Ingersoll Rand, IR, the IR logo and Centac are trademarks of Ingersoll Rand, its subsidiaries and/or affiliates. All other trademarks are the property of their respective owners. Ingersoll Rand compressors are not designed, intended or approved for breathing air applications. Ingersoll Rand does not approve specialized equipment for breathing air applications and assumes no responsibility or liability for compressors used for breathing air service.

Nothing contained on these pages is intended to extend any warranty or representation, expressed or implied, regarding the product described herein. Any such warranties or other terms and conditions of sale of products shall be in accordance with Ingersoll Rand's standard terms and conditions of sale for such products, which are available upon request.

Product improvement is a continuing goal at Ingersoll Rand. Designs and specifications are subject to change without notice or obligation.